



City of Cleveland
Justin M. Bibb, Mayor

Department of Finance
Division of Purchases & Supplies
601 Lakeside Avenue, Room 128
Cleveland, Ohio 44114-1080
216/664-2620 • Fax: 216/664-2177
www.cleveland-oh.gov

January 29, 2024

ADDENDUM No. 1

BID TITLE: Reference: File No. 7-24 City Hall Signage

BID DUE: *Extended to Wednesday, February 28, 2024 from* Wednesday, February 14, 2024.
Bid must be delivered to the Office of the Commissioner of Purchases and Supplies, Cleveland City Hall, 601 Lakeside Avenue, Room 128, Cleveland, Ohio 44114 before 12 o'clock Noon (Eastern Time).

PLEASE NOTE THE FOLLOWING CLARIFICATIONS TO THE CONTRACT DOCUMENTS:

I. Changes to the Project Manual:

A. Part D – Detail Specifications:

1. Section D-15 Contract Documents, City of Cleveland Division of Architecture & Site Development Drawings: Added A-2 Elevator Lobby Sign Elevations

B. Schedule of Prices:

1. Alternate #2 Revised to a Deduct Alternate to Omit Power to Sign Type G1, Overhead Garage ID
2. Alternate #3 Digital Wall Mount Signs in Lower Level & First Floor Elevator Lobbies: sign description revised & reference to drawing A-2 describing signs added.
3. Unit Price #24 Digital Wall Mount Signs in Lower Level & First Floor Elevator Lobbies: sign description revised & reference to drawing A-2 describing signs added.



City of Cleveland
Justin M. Bibb, Mayor

Department of Finance
Division of Purchases & Supplies
601 Lakeside Avenue, Room 128
Cleveland, Ohio 44114-1080
216/664-2620 • Fax: 216/664-2177
www.cleveland-oh.gov

II. Changes to the Drawing Set:

1. **Added Drawing A-1, hallway Painting Reference Plan:** City of Cleveland Division of Architecture drawing provides reference dimensions (to be verified) for fifth floor common hallway areas to be painted per sheet 35 of the Guide Studio Design Intent Set & Alternate #4.
2. **Added Drawing A-2, Elevator Lobby Digital Wall Mount Sign Elevations:** City of Cleveland Division of Architecture interior elevation drawing to show the planned digital signs in the Lower Level & Floor 1 elevator lobbies.

The last day for questions has been extended to Friday, February 2, 2024 at 12 pm local time. All questions must be sent to both purchasing@clevelandohio.gov and jgilliam@clevelandohio.gov or via fax (216) 664-2275. Please reference the file number and name of project within the subject line.

***THE BID OPENING DATE EXTENDED
TO WEDNESDAY, FEBRUARY 28, 2024
FROM:
WEDNESDAY, FEBRUARY 14, 2024
at 12:00 NOON.***

Attention Bidders:

We have been requested to issue the enclosed Addendum to the above entitled bid project. This addendum is to advise all bidders of the following information:

Also, please acknowledge receipt of this addendum by faxing directly to my attention at (216) 664-2275.

Print & Sign Potential Bidder & Company Name

Today's Date

Addendum #1 – File No. 7-24 City Hall Signage
Page 2 of 3



City of Cleveland
Justin M. Bibb, Mayor

Department of Finance
Division of Purchases & Supplies
601 Lakeside Avenue, Room 128
Cleveland, Ohio 44114-1080
216/664-2620 • Fax: 216/664-2177
www.cleveland-oh.gov

Also, please attach this addendum to the copy of the specifications furnished to you by this office, as it will have the same force and effect as if it were part of the specifications originally issued.

Thank you,

J. Gilliam @ 2024

Jules Gilliam, Buyer
Division of Purchases & Supplies

Cc: Commissioner Tiffany White, Division of Purchases & Supplies

Attachments: Addendum #1 Cover Sheets – (Three) 3 Pages;
Revised Part D-Detailed Specifications Page 7 of 8 - (One) 1 Page;
Revised Schedule of Prices – (Two) 2 Pages;
Revised Drawings – (Four) 4 Pages

Total: Ten (10) Pages

Addendum #1 – File No. 7-24 City Hall Signage

D-15. CONTRACT DOCUMENTS

The Contract Documents comprise the following drawings:

GUIDE STUDIO DESIGN INTENT DRAWING SET

COVER SHEET

SPECIFICATIONS

- i PERFORMANCE SPECIFICATIONS
- ii PERFORMANCE SPECIFICATIONS
- iii PERFORMANCE SPECIFICATIONS
- iv PERFORMANCE SPECIFICATIONS
- v PERFORMANCE SPECIFICATIONS
- vi PERFORMANCE SPECIFICATIONS
- vii PERFORMANCE SPECIFICATIONS

DRAWINGS

- 1 COLORS, MATERIALS, & GRAPHICS
- 2 PRIMARY DIRECTIONAL – SIGN TYPE A1
- 3 SECONDARY DIRECTIONAL – SIGN TYPE A2
- 4 ELEVATOR DIRECTORY – SIGN TYPE A3
- 5 STAIR DIRECTORY - STANDARD: SIGN TYPE A4.1
- 6 STAIR DIRECTORY - LARGE: SIGN TYPE A4.2
- 7 DEPARTMENT ID–PROJECTING: SIGN TYPE B2
- 8 ELEVATOR BUTTON ID: SIGN TYPE B6
- 9 PUBLIC CONVENIENCE ID–PROJECTING: SIGN TYPE C1
- 10 PUBLIC CONVENIENCE ID: SIGN TYPE C2
- 11 GENDER INCLUSIVE INFORMATION: SIGN TYPE C3
- 12 STAIR IDENTIFICATION: SIGN TYPE C4
- 13 DIGITAL WALL MOUNT: SIGN TYPE D1.1
- 14 DIGITAL WALL MOUNT: SIGN TYPE D1.1 ELEVATIONS
- 15 DIGITAL TOTEM: SIGN TYPE D1.2
- 16 DIGITAL RETROFIT: SIGN TYPE D1.3
- 17 ENTRY GATEWAY: SIGN TYPE F3
- 18 ELEVATOR LOBBY GRAPHICS: SIGN TYPE F4-LOWER LEVEL WEST
- 19 ELEVATOR LOBBY GRAPHICS: SIGN TYPE F4-LOWER LEVEL WEST
- 20 ELEVATOR LOBBY GRAPHICS: SIGN TYPE F4-LOWER LEVEL WEST
- 21 ELEVATOR LOBBY GRAPHICS: SIGN TYPE F4-LOWER LEVEL WEST
- 22 ELEVATOR LOBBY GRAPHICS: SIGN TYPE F4-LOWER LEVEL WEST
- 23 ELEVATOR LOBBY GRAPHICS: SIGN TYPE F4-LOWER LEVEL WEST
- 24 ELEVATOR LOBBY GRAPHICS: SIGN TYPE F4-LOWER LEVEL WEST
- 25 ELEVATOR LOBBY GRAPHICS: SIGN TYPE F4-LOWER LEVEL WEST
- 26 ELEVATOR LOBBY GRAPHICS: SIGN TYPE F4-LOWER LEVEL WEST
- 27 ELEVATOR LOBBY GRAPHICS: SIGN TYPE F4-LOWER LEVEL WEST
- 28 ELEVATOR LOBBY GRAPHICS: SIGN TYPE F4-LOWER LEVEL WEST
- 29 ELEVATOR LOBBY GRAPHICS: SIGN TYPE F4-LOWER LEVEL WEST
- 30 ELEVATOR LOBBY GRAPHICS: SIGN TYPE F4-LOWER LEVEL WEST
- 31 ELEVATOR LOBBY GRAPHICS: SIGN TYPE F4-PAINTING DIAGRAMS
- 32 ELEVATOR LOBBY GRAPHICS: SIGN TYPE F4-PAINTING DIAGRAMS
- 33 OVERHEAD GARAGE ENTRY ID
- 34 PAY HERE ID / INFO
- 35 FLOOR 5 PAINTING

GUIDE STUDIO SIGNAGE LOCATION PLANS

- LL LOWER LEVEL
- FL1 FLOOR 1
- FL2 FLOOR 2
- FL3 FLOOR 3
- FL4 FLOOR 4
- FL5 FLOOR 5

GUIDE STUDIO SIGN MESSAGE SCHEDULE (33 PAGES)

CITY OF CLEVELAND DIVISION OF ARCHITECTURE & SITE DEVELOPMENT

- A-1 HALLWAY REFERENCE PAINTING PLAN (FIFTH FLOOR)
- A-2 ELEVATOR LOBBY SIGN ELEVATIONS

SCHEDULE OF PRICES

CITY HALL SIGNAGE

ALTERNATES (GROSS PRICE):

To furnish all labor, materials, tools, and equipment required to perform and deliver the ALTERNATE(S) as shown on the Drawings and in compliance with the requirements pertaining to Alternates in the Specifications Project Manual and SECTION D-2, SUMMARY OF WORK.

ALTERNATES:

ALTERNATE #1:

RELOCATION OF AEDs (AUTOMATED EXTERNAL DEFIBRILLATOR)

In interior City Hall elevator lobbies with the exception of the First Floor, relocate Public Safety AEDs & associated signs to accommodate Sign Type F4 – a total of 10 each AEDs & signs. AED is to be relocated within elevator lobby, to wall parallel to elevators on opposite side of lobby. On Floors 2-5 & the Lower Level, sign is to be relocated to marble strip in opening to corridor. On Lower Level, sign is to be relocated to plaster in opening to corridor. Final locations to be coordinated with owner.

\$ _____

DEDUCT ALTERNATE #2:

OMIT POWER TO SIGN TYPE G1, OVERHEAD GARAGE ID

Omit all labor, material, tools, & equipment required to provide power to Sign Type G1.

\$ _____

ALTERNATE #3:

DIGITAL WALL MOUNT SIGNS IN LOWER LEVEL & FIRST FLOOR ELEVATOR LOBBIES

Non-touchscreen digital displays with enclosures as described in City of Cleveland Division of Architecture drawing A-2 & on Guide Studio Location Plan.

\$ _____

ALTERNATE #4:

PAINTING OF FLOOR 5 HALLWAY AREAS

Identified on sheet 35 of Guide Studio Design Intent Set & City of Cleveland Division of Architecture drawing A-1.

\$ _____

FIRM

ADDRESS

TELEPHONE NUMBER

SIGNATURE OF BIDDER

DATE

SCHEDULE OF PRICES

CITY HALL SIGNAGE

UNIT PRICE #16:

SIGN TYPE C4, STAIR IDENTIFICATION

\$ _____ /EACH

UNIT PRICE #17:

SIGN TYPE D1.1, DIGITAL WALL MOUNT

\$ _____ /EACH

UNIT PRICE #18:

SIGN TYPE D1.2, DIGITAL TOTEM

\$ _____ /EACH

UNIT PRICE #19:

SIGN TYPE D1.3, DIGITAL RETROFIT

\$ _____ /EACH

UNIT PRICE #20:

SIGN TYPE F3, ENTRY GATEWAY

\$ _____ /EACH

UNIT PRICE #21:

SIGN TYPE F4, ELEVATOR LOBBY GRAPHICS

\$ _____ /EACH

UNIT PRICE #22:

SIGN TYPE G1, OVERHEAD GARAGE ENTRY ID

\$ _____ /EACH

UNIT PRICE #23:

SIGN TYPE G4, PAY HERE ID/INFO

\$ _____ /EACH

UNIT PRICE #24:

DIGITAL WALL MOUNT SIGNS IN LOWER LEVEL AND FIRST FLOOR ELEVATOR LOBBIES

Description: Non-touchscreen digital displays with enclosures as described in City of Cleveland Division of Architecture drawing A-2 & on Guide Studio Location Plan. Final locations to be coordinated with owner.

\$ _____ /EACH

END OF SCHEDULE OF PRICES

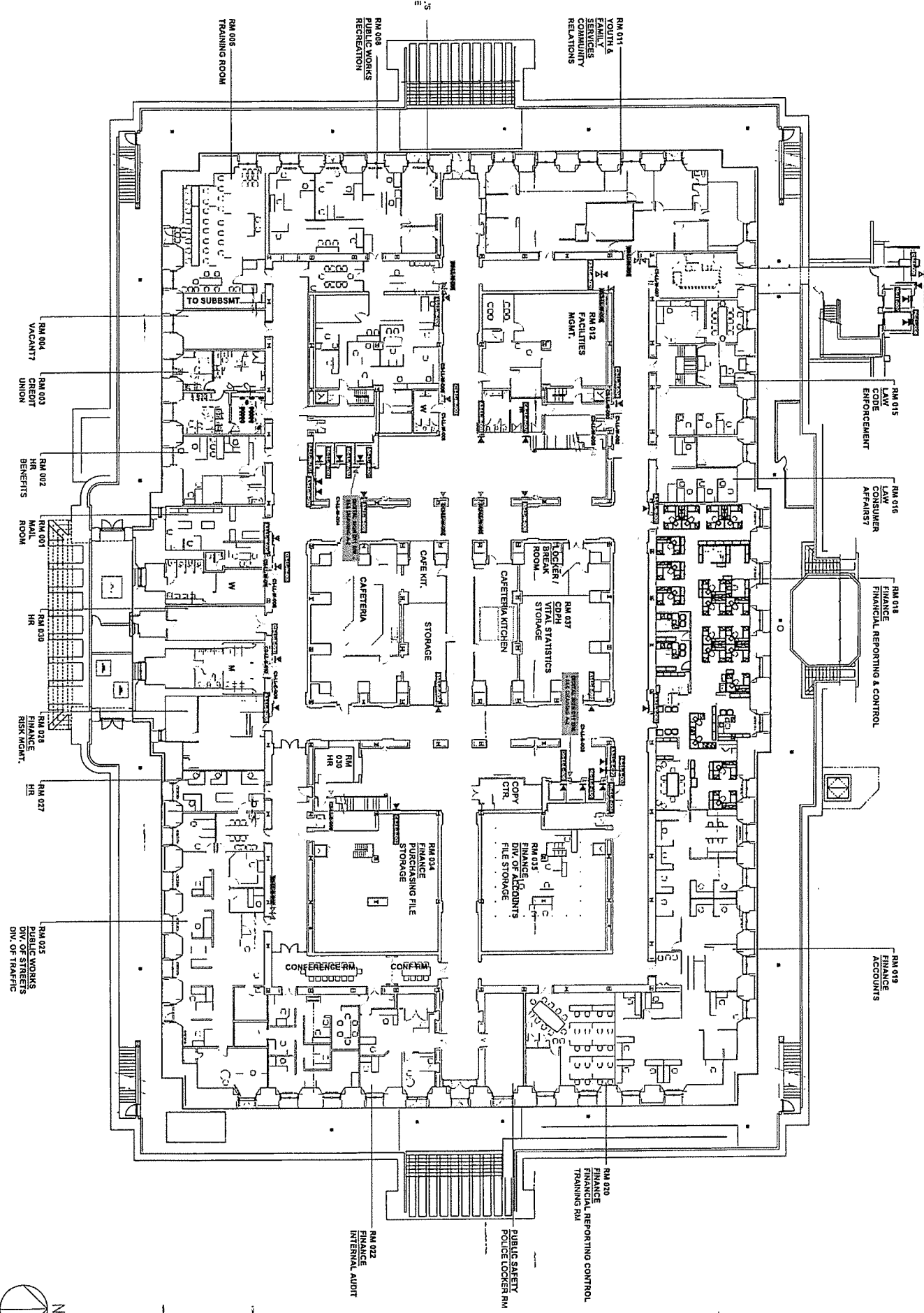
FIRM

ADDRESS

TELEPHONE NUMBER

SIGNATURE OF BIDDER

DATE



Guide
guidelines.com

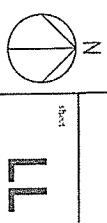
Project Name
Cleveland City Hall
Interior Sign Program

Client
City of Cleveland
Design & Project

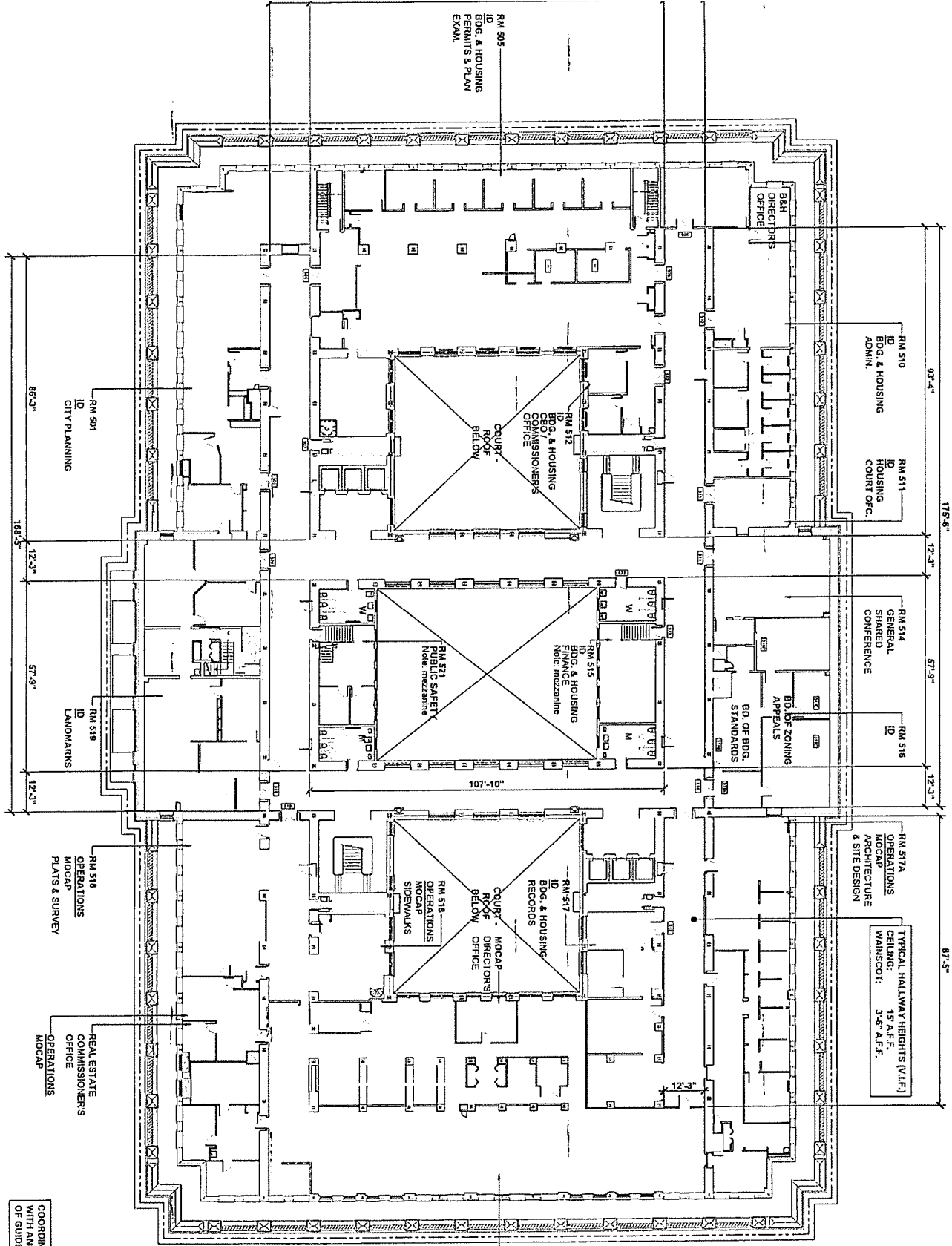
Notes
1. All signage shall be installed in accordance with the City of Cleveland Signage Ordinance.
2. All signage shall be installed in accordance with the City of Cleveland Signage Ordinance.
3. All signage shall be installed in accordance with the City of Cleveland Signage Ordinance.

Signage Locator Plans

Lower Level
Date: 10/1/2014
Drawn: [Name]
Scale: 1/8" = 1'-0"



LL



FIFTH FLOOR PLAN

COORDINATE PAINTING EXTENTS WITH AND SEE NOTES ON SHEET 35 OF GUIDE STUDIO DESIGN INTENT SET

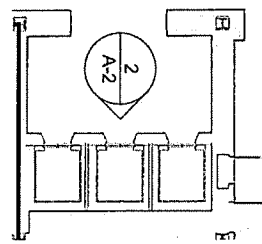
PROJECT NO. 1

SHEET NC

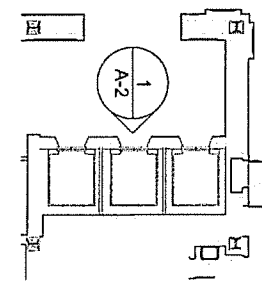
CITY OF CLEVELAND
DEPT. OF ARCHITECTURE & SITE DESIGN

City of Cleveland
Mayor's Office of Capital Projects
Division of Architecture

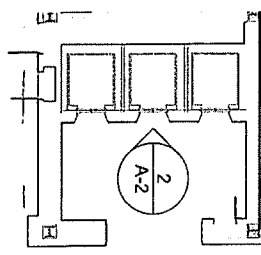
ISSUED /	NO.	DATE
1	01/21	
2		
3		
4		
5		
6		
7		
8		
9		
10		
11		
12		
13		
14		
15		
16		
17		
18		
19		
20		
21		
22		
23		
24		
25		
26		
27		
28		
29		
30		
31		
32		
33		
34		
35		
36		
37		
38		
39		
40		
41		
42		
43		
44		
45		
46		
47		
48		
49		
50		
51		
52		
53		
54		
55		
56		
57		
58		
59		
60		
61		
62		
63		
64		
65		
66		
67		
68		
69		
70		
71		
72		
73		
74		
75		
76		
77		
78		
79		
80		
81		
82		
83		
84		
85		
86		
87		
88		
89		
90		
91		
92		
93		
94		
95		
96		
97		
98		
99		
100		



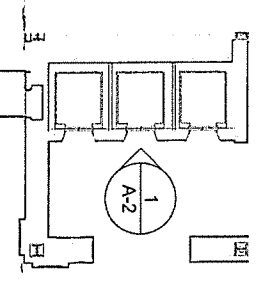
6 FLOOR 1 NORTHEAST
ELEVATOR LOBBY FLOOR PLAN
SCALE: 1/8" = 1'-0"



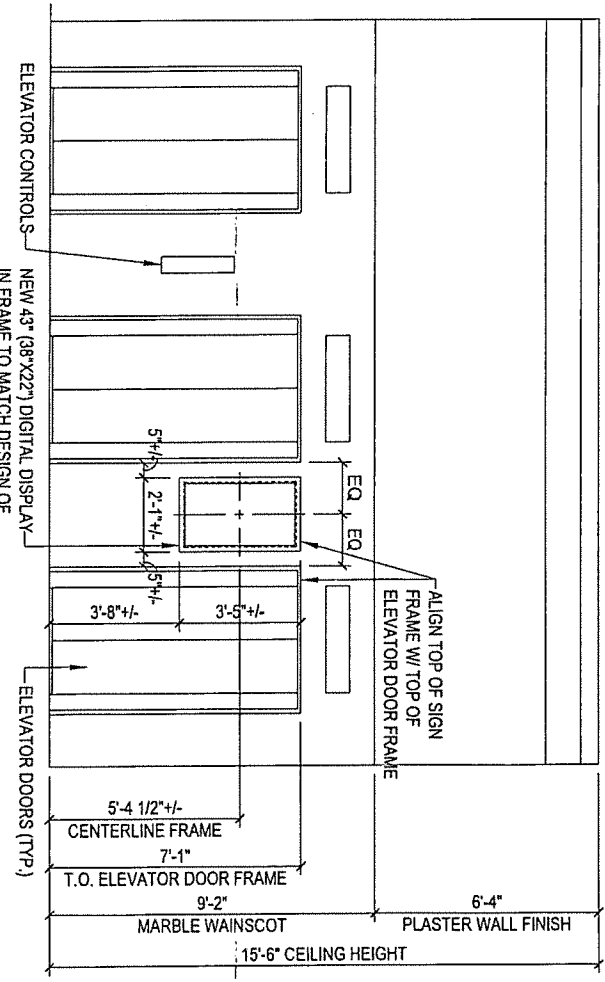
4 LOWER LEVEL NORTHEAST
ELEVATOR LOBBY FLOOR PLAN
SCALE: 1/8" = 1'-0"



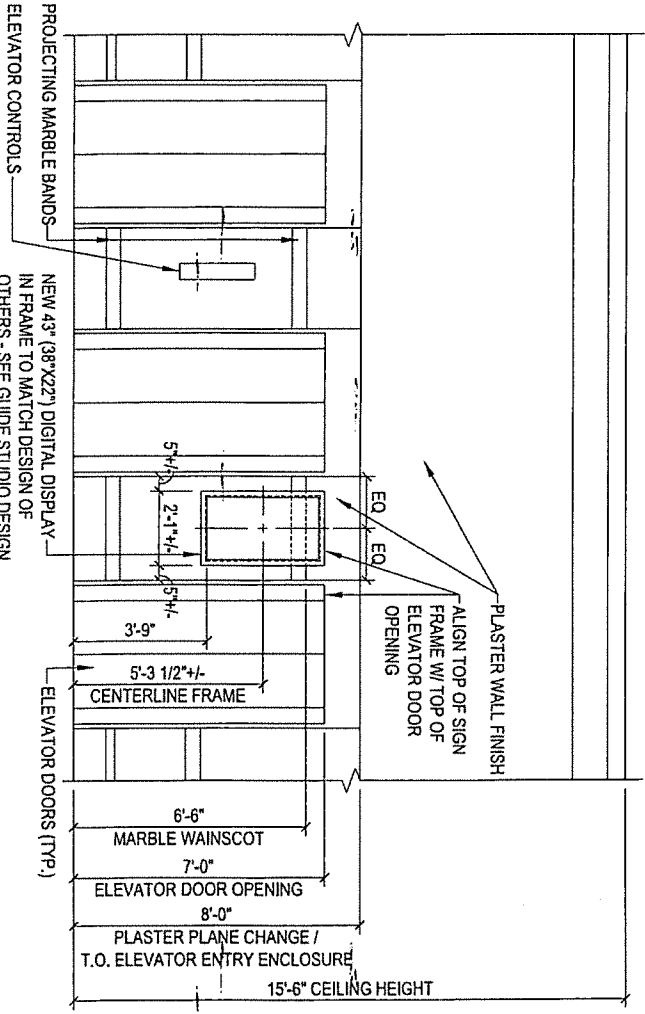
5 FLOOR 1 SOUTHWEST
ELEVATOR LOBBY FLOOR PLAN
SCALE: 1/8" = 1'-0"



3 LOWER LEVEL SOUTHWEST
ELEVATOR LOBBY FLOOR PLAN
SCALE: 1/8" = 1'-0"



2 FLOOR 1 ELEVATOR
LOBBY SIGN ELEVATION
SCALE: 1/4" = 1'-0"



1 LOWER LEVEL ELEVATOR
LOBBY SIGN ELEVATION
SCALE: 1/4" = 1'-0"

ISSUED / 1	NO.	DATE
	1	01/22
TITLE:		
ELEVATOR LOBBY SIGN		
PROJECT NO.		
SCALE: AS		
SHEET NO.		